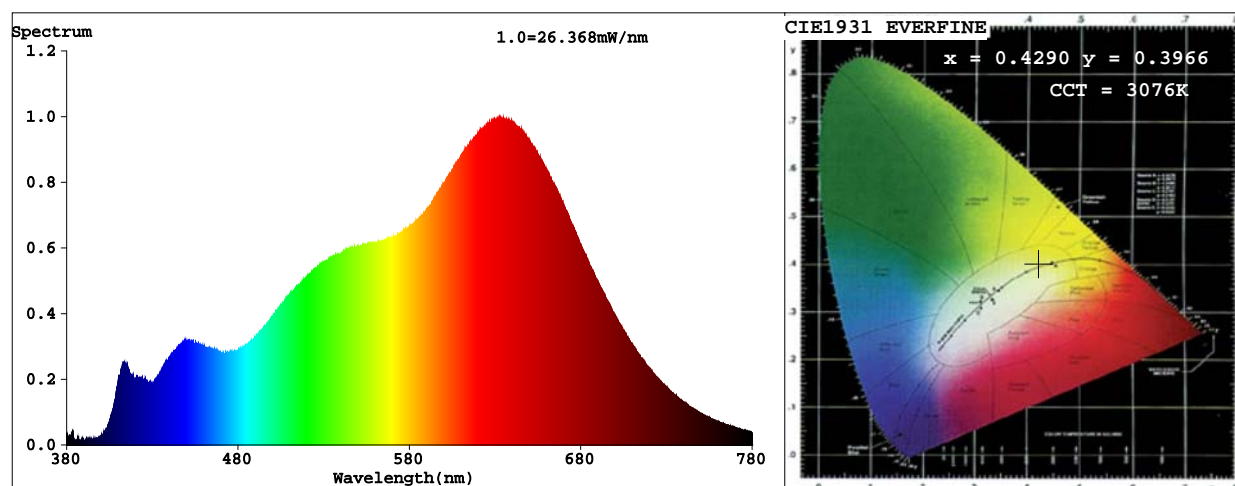


Spectrum Test Report



Color Parameters:

Chromaticity Coordinate: $x=0.4290$ $y=0.3966$ / $u'=0.2487$ $v'=0.5172$

CCT=3076K(Duv=-0.0019) Dominant WL:Ld =583.2nm Purity=47.8%

Ratio:R=25.0% G=71.7% B=3.3% Peak WL:Lp=632.9nm FWHM=172.0nm

Render Index:Ra=96.9

R1 =97 R2 =99 R3 =96 R4 =94 R5 =97 R6 =97 R7 =98

R8 =98 R9 =99 R10=99 R11=92 R12=98 R13=97 R14=96 R15=98

Photo Parameters:

Flux = 1222 lm Eff. : 85.18 lm/W Fe = 4.694 W

Scotopic:1849.3 S/P:1.5138

Electrical parameters:

V = 23.998 V I = 0.5976 A P = 14.34 W PF = 1.000

LEVEL:OUT WHITE:ANSI_3000K

Status: Integral T = 341 ms Ip = 50605 (77%)

Model:SUNLIKE-3030-70L

Tester:QC

Temperature:25.3Deg

Manufacturer:P53GY3

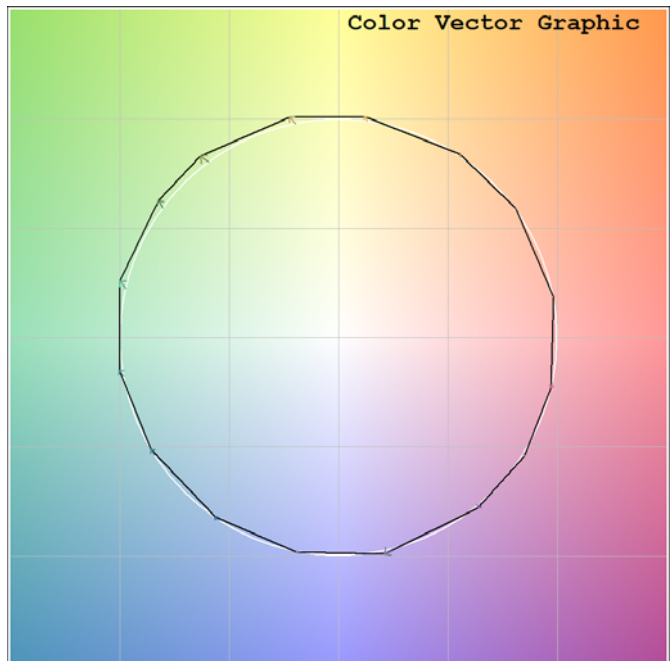
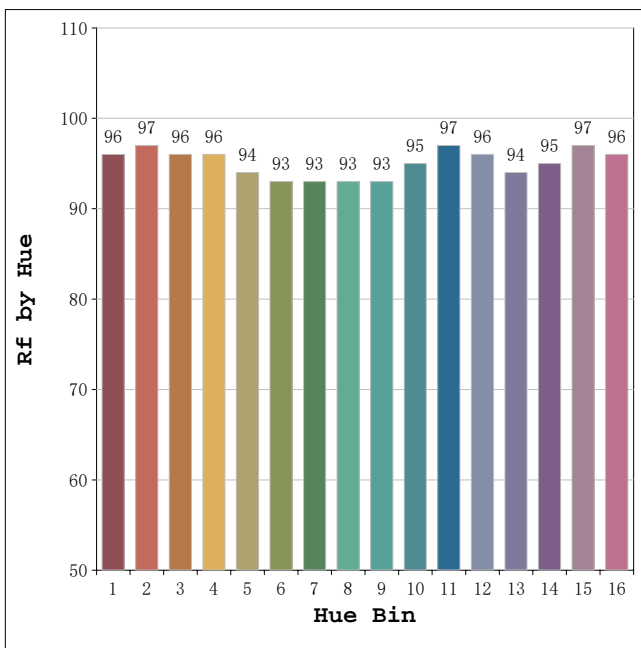
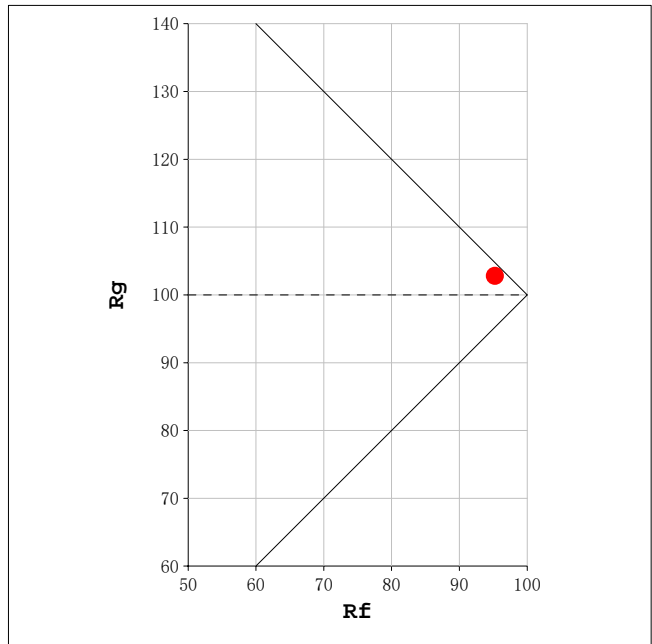
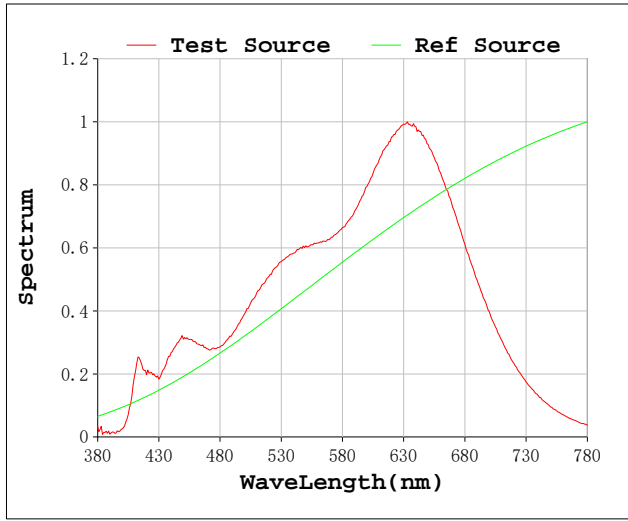
Number:1911253-3000K

Date:2019-12-05

Humidity:65.0%

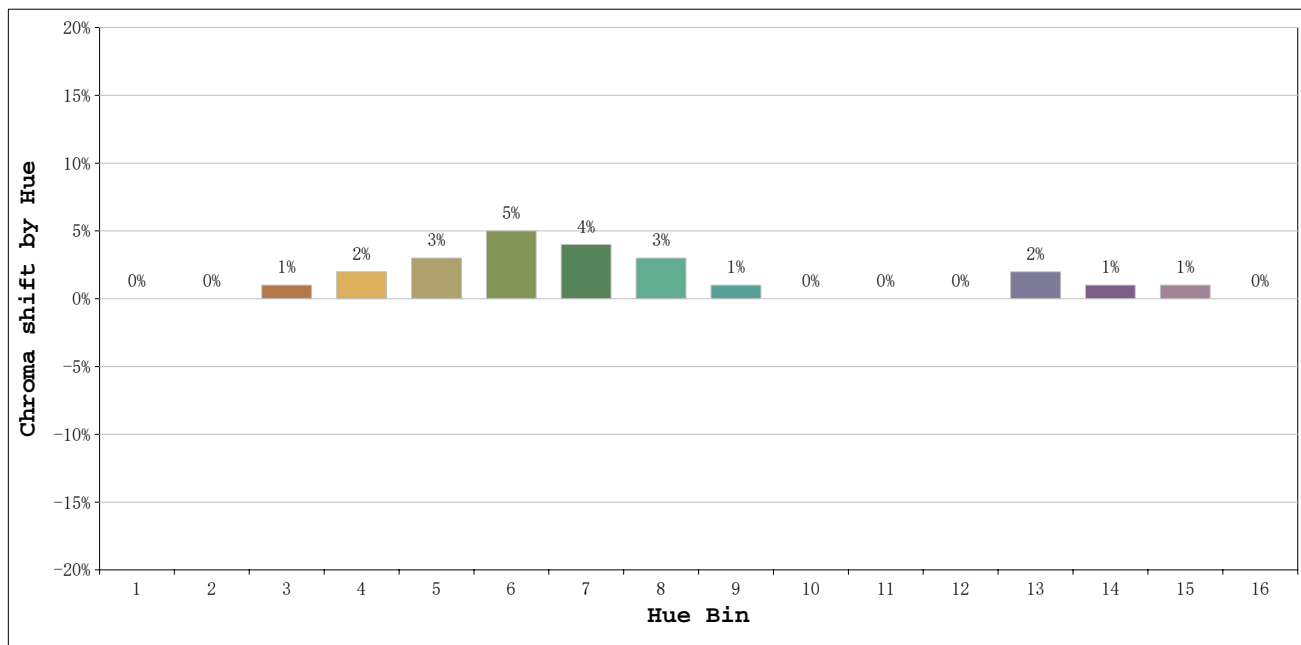
Remarks:IC402+13R

Rf: 95 CCT: 3076 K u': 0.2487
 Rg: 103 Duv: -0.0019 v': 0.5172



Model: SUNLIKE-3030-70L
 Tester: QC
 Temperature: 25.3Deg
 Manufacturer: P53GY3

Number: 1911253-3000K
 Date: 2019-12-05
 Humidity: 65.0%
 Remarks: IC402+13R



Hue Bin	Hue Angle	Rf	Graphic shift(%)	
			Chroma	Hue
1	0.0° - 22.5°	96	0	0
2	22.5° - 45.0°	97	0	0
3	45.0° - 67.5°	96	1	1
4	67.5° - 90.0°	96	2	1
5	90.0° - 112.5°	94	3	2
6	112.5° - 135.0°	93	5	2
7	135.0° - 157.5°	93	4	-1
8	157.5° - 180.0°	93	3	-2
9	180.0° - 202.5°	93	1	-2
10	202.5° - 225.0°	95	0	-2
11	225.0° - 247.5°	97	0	-1
12	247.5° - 270.0°	96	0	0
13	270.0° - 292.5°	94	2	-3
14	292.5° - 315.0°	95	1	-1
15	315.0° - 337.5°	97	1	0
16	337.5° - 360.0°	96	0	-1

Model: SUNLIKE-3030-70L
 Tester: QC
 Temperature: 25.3Deg
 Manufacturer: P53GY3

Number: 1911253-3000K
 Date: 2019-12-05
 Humidity: 65.0%
 Remarks: IC402+13R